

Chesterfield Mews

Master landscape plan
2012



Plan Components

- Turf
 - Renovation.
 - Aeration and seeding.
 - Terra-seeding
 - Alternatives.
 - Mulch beds. (mulch, woodchips, composted leaves)
 - Ground cover.
- Enhancements
- Trees
- Watering/sustain the improvements.



TURF Component

– Turf Renovation

- Aeration and seeding-Property will be evaluated in late summer for a comprehensive aeration and seeding plan. All turf areas will be aerated using walk behind aerators and PTO tractor aeravator
- Entire property will then be overseeded using Turftype Tall Fescue and Fine Fescue in shady areas at appropriate rates.
- Results are cumulative overtime and aeration and seeding should be done annually



TURF aggressive renovation

Terraseeding-Specific areas below should be done in late summer/early fall like we did along entrance. We will assess in late summer should we decide to do additional areas. These areas are not too shady to support grass



Along Guysborough



Eakin Park Island along
Guysborough Dr.



TURF Alternatives

*Mulch beds. (mulch, woodchips, composted leaves)



Along Rt. 50 behind
3131 Guysborough



Along Rt. 50 behind 3130-
3132 Colchester Brook

***-mulch/woodchip
area (20,000sq ft.)
Along Rt. 50***

Under Pine
trees on left
side of
Colchester
Brook



Pine Trees behind 3145
Eakin Park

***-create beds
and mulch other
2 areas (1,900
sq ft)***



TURF Alternatives

*Ground cover



Eroding Area behind 3134
Colchester Brook



Stump behind 3134
Colchester Brook



Existing Pachysandra on
property



***-remove stumps, add
topsoil, ground cover,
mulch (2,340 square feet)
(750 sq feet ground cover
and 1600 sq feet of
mulch.)***

Mulch and stone

*-renovate area with mulch
and flagstone pad (54sq
feet)*



Island in Front of 3134 Colchester Brook



Island Front of 3185 Colchester Brook

Mulch area and
create a flagstone
pad of 54 sq feet.



Erosion/Denuded area on side of 3181 Colchester Brook



- to renovate area with ground cover and create large mulch bed in center picture.

Mulch bed in center picture bed is 10,800 square feet



Erosion area between units 3177 and 3181 Readsborough Ct.

400sq feet



Enhancements Component

- Entrance first and second layer
- Traffic circle
- Hill side bed
- Corner beds
- Parking lot beds and islands



Entrance (first layer)



Entrance (second layer)



Additional color component
12 Aucuba
26 Black Scallop Ajuga

Traffic circle

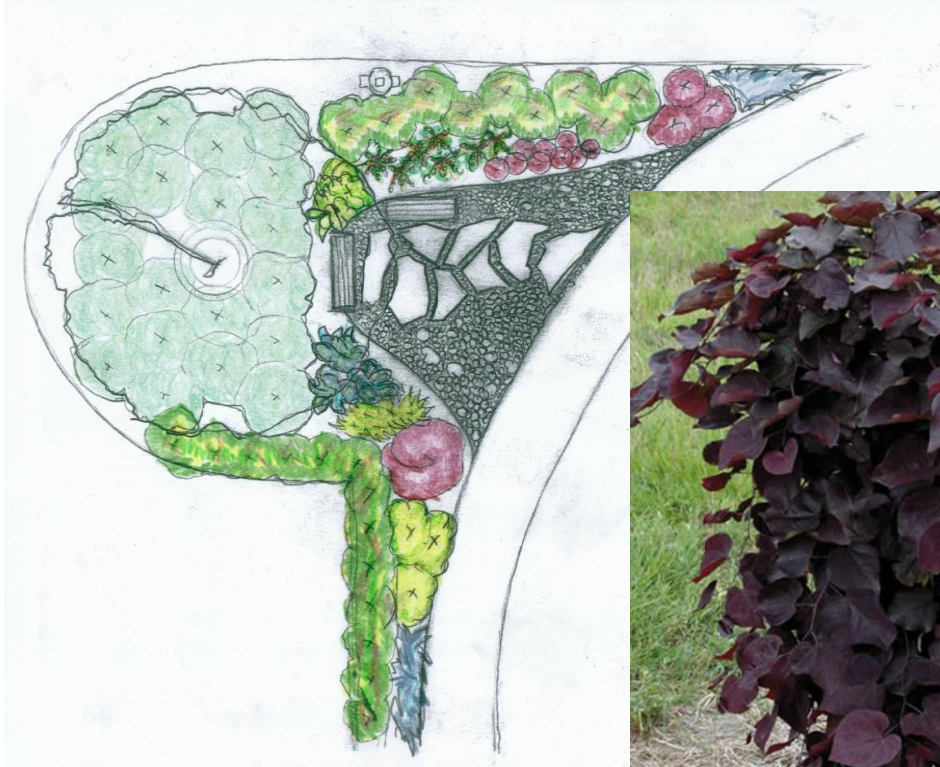


**PROFESSIONAL
GROUNDS, INC.**

Hill side bed



Corner bed with seating area





PROFESSIONAL
GROUND, INC.



**PROFESSIONAL
GROUNDS, INC.**



**PROFESSIONAL
GROUNDS, INC.**

Hardscape component



Corner bed (opposite)



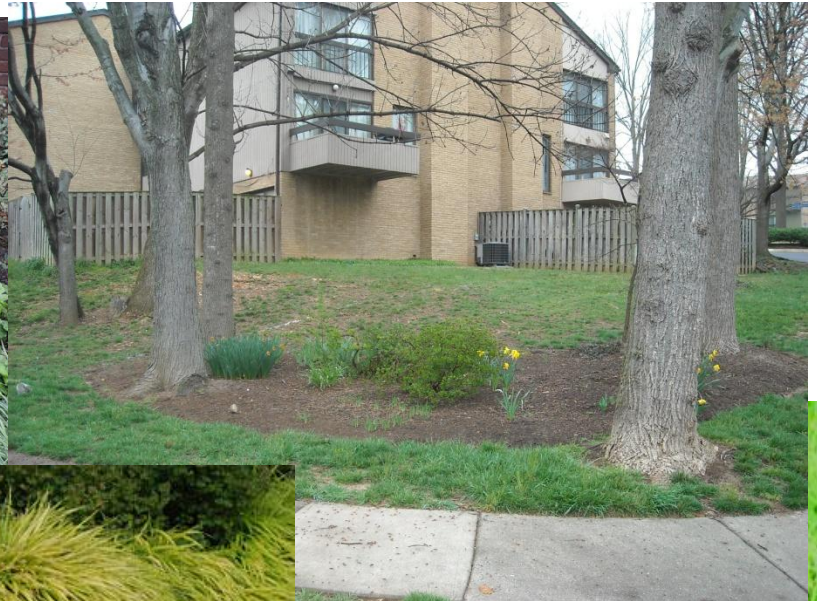
Corner bed under-planting



Intersection of
Guysborough and
Colchester Brook



Corner bed at Colchester brook



Parking lot beds



Parking lot islands

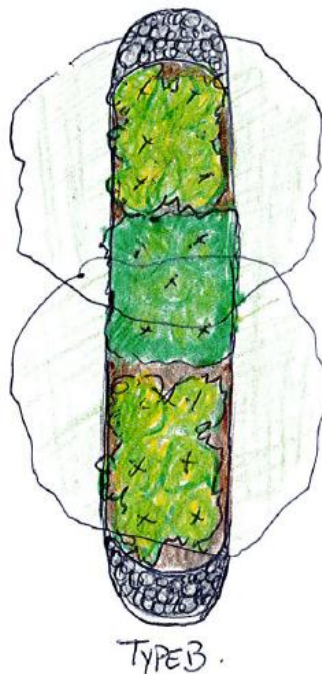


Island design

Type A per island



Type B per island



**PROFESSIONAL
GROUNDS, INC.**

Tree Care

- Site was evaluated by a Licensed Arborist
 - No immediate threats or concerns were noted!
 - Money should be set aside to do additional deadwooding/crown cleaning on Readsborough to include some corrective pruning this spring/fall
 - Set aside Money for possible storm damage and/or removals which may arise this season



Watering and Future Care

- All plants selected are hearty, low maintenance plants selected to perform well in specific locations
- BOD will need to budget initial watering for plant establishment. Frequency of watering dependant upon weather conditions-2 times per week initially
- Plants are under warranty for 1 year or for life of landscape contract since we maintain property and community has IPM program.

